

we reduce it. waste. costs. problems.

MERAK.

Twin-Shaft Rotary Shears



we reduce it
LINDNER
Recyclingtech

KogaRecyclingtech

PO Box 6010 East Brighton
Victoria 3187 Australia
p +61 3 9592 4304
f +61 3 9591 0581
e info@koga.com.au
w www.koga.com.au

MERAK.

1500 electric

Product description

Slow-running twin-shaft rotary shears with individually replaceable and regrindable tool segments. Used primarily for (primary) size reduction of car and truck tires.

Throughput capacity

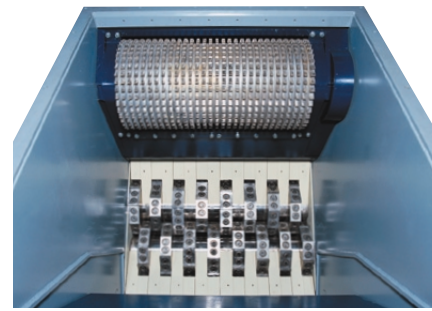
Approximately 8 tons per hour (mixed car and truck tires / 100mm cylinder screen).

Applications

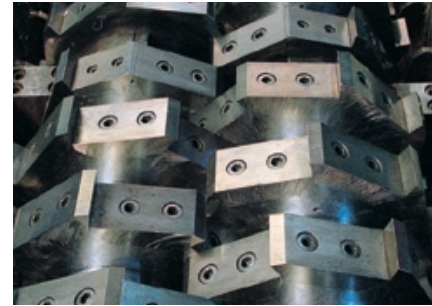
Shredding of car, truck and tractor tires with a diameter of up to 1400 mm and a width of up to 450 mm; steel and plastic drums with a capacity of up to 220 l, plastic containers with a capacity of up to 1200 l, domestic refuse, industrial waste, etc.

Technical data

	MERAK 1500 electric
Cutting area	1500 x 1100 mm
Number of blades	160
Blade width	100 mm
Cutting disk diameter	520 mm
Drive power	1 x 55 kW and 1 x 75 kW
Overall dimensions LxWxH	3520 x 2680 x 3400 mm
Weight	approx. 13.000 kg



A spacious hopper and an auxiliary intake roll ensure smooth feeding.

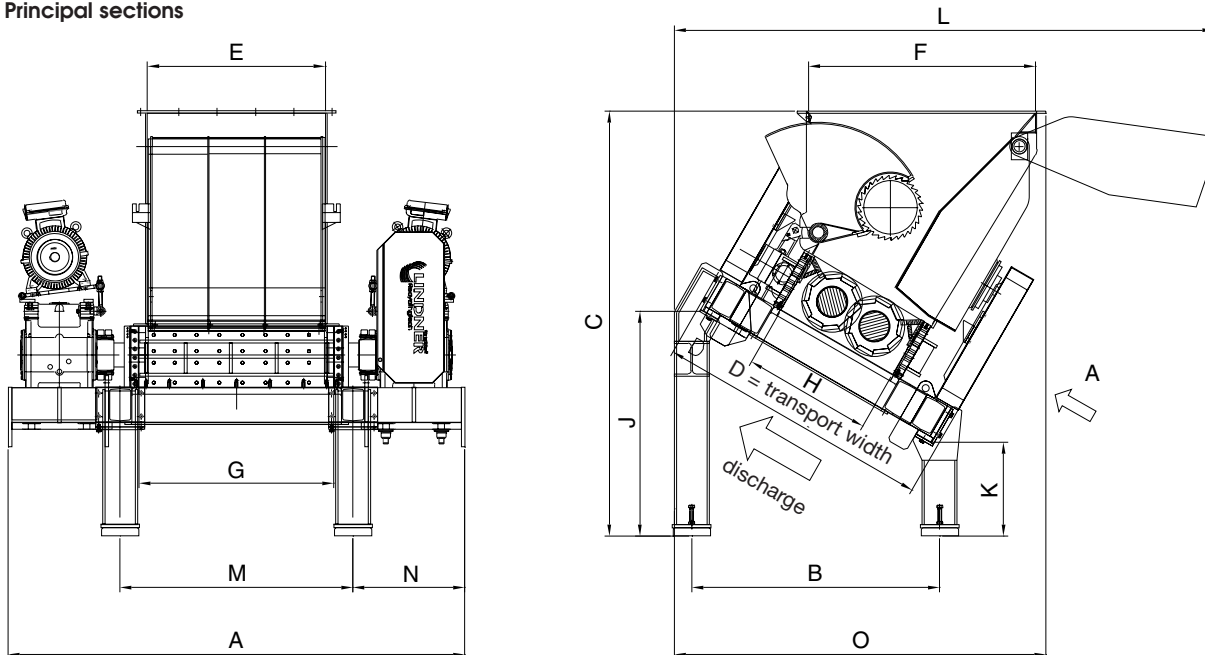


Solid shafts and wear-resistant materials are used for maximum reliability.



With the special Ecofix system, tooling replacement does not require removal of the rotor shaft - an important availability advantage.

Principal sections



Dimensions

in mm	A	B	C	D	E	F	G	H			
MERAK 1500	3920	2130	3650	2370	1530	1950	1670	1100			
in mm	J	K	L	M	N	O					
MERAK 1500	1930	800	4635	2000	960	3200					

size reduction machines and systems