

# MICROMAT. 1500 - 2000



## Product description



Slow-running single-shaft shredder suited in particular for the processing of plastic materials.

## Application

Granulating of mixed plastics for thermal treatment or recycling. Size reduction of paper, cardboard, files, granulation of various plastics and foam-plastics, containers, rubber, leather, textiles, floorings, cables, computer scrap, wood, etc.

## Throughput capacity

Example: PE-film bales 2 tons per hour (20 mm screen)\*

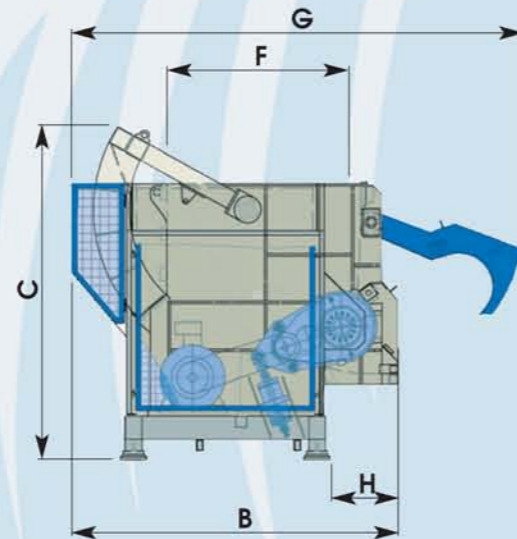
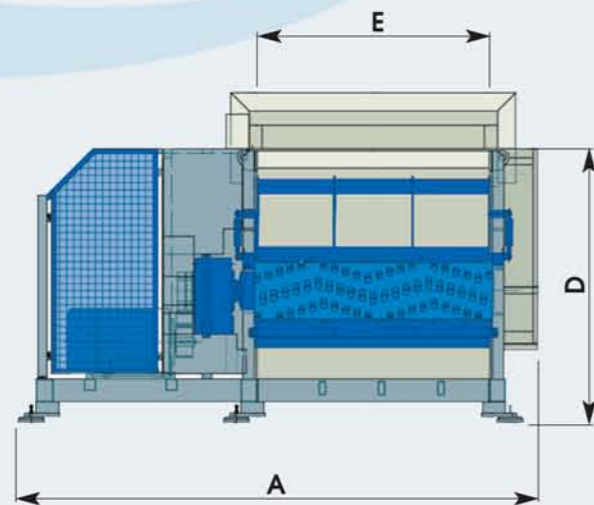
## Technical data

	MICROMAT 1500	MICROMAT 2000
Feed opening / Hopper	2300 x 1930 mm	2800 x 2000 mm
Hopper space	approx. 3 m <sup>3</sup>	approx. 4 m <sup>3</sup>
Shredding area	1530 x 1600 mm	2030 x 1650 mm
Rotor length	1530 mm	2030 mm
Rotor periphery	460 mm	560 mm
Rotor speed	80 rpm	80 - 120 rpm
Number of blades	73 pcs.	104 pcs.
Counter-blades	3 pcs.	3 pcs.
Scrapers	3 pcs.	3 pcs.
Driving power	1 x 75 kW	1 x 90 kW, 1 x 110 kW
Hydraulic pusher system	5,5 kW	5,5 kW
Screen	15 - 80 mm	15 - 80 mm
Weight	approx. 7500 kg	approx. 11000 kg

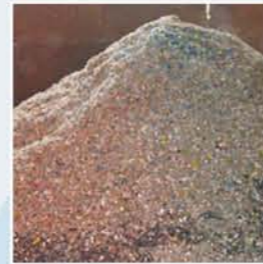
\* Values for the orientation; depending on material, input- and output-size

## Dimensions

in mm	A	B	C	D	E	F	G	H
MICROMAT 1500	3770	2460	2450	2500	1530	1600	3600	550
MICROMAT 2000	4590	2800	3000	2500	2030	1650	3600	600



Input-material



Output-sizes: 15 - 80 mm\*

# MICROMAT. Single-Shaft Shredder.

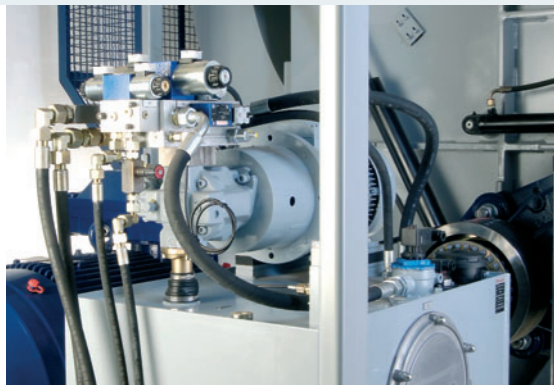
we reduce it. waste. costs. problems.

Status quo: October 2006 - technical changes, literal mistake and errors reserved.



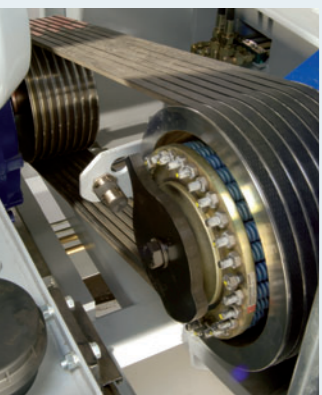
PO Box 6010 East Brighton  
Victoria 3187 Australia  
p + 61 3 9592 4304  
f + 61 3 9591 0581  
e info@koga.com.au  
w www.koga.com.au





### Hydraulics

Operation of proportionally controlled pusher system, operation of maintenance door (swivel-out-wall) with integrated screen-support



### Drive

Electric motor by v-belt-drive and transmission on rotor, with safety clutch on gearbox



### Hydraulic Pusher System

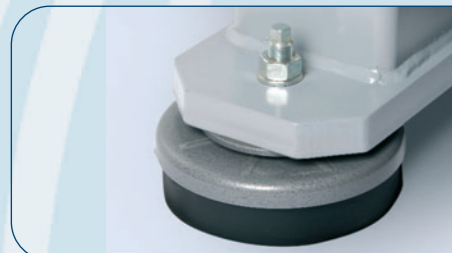
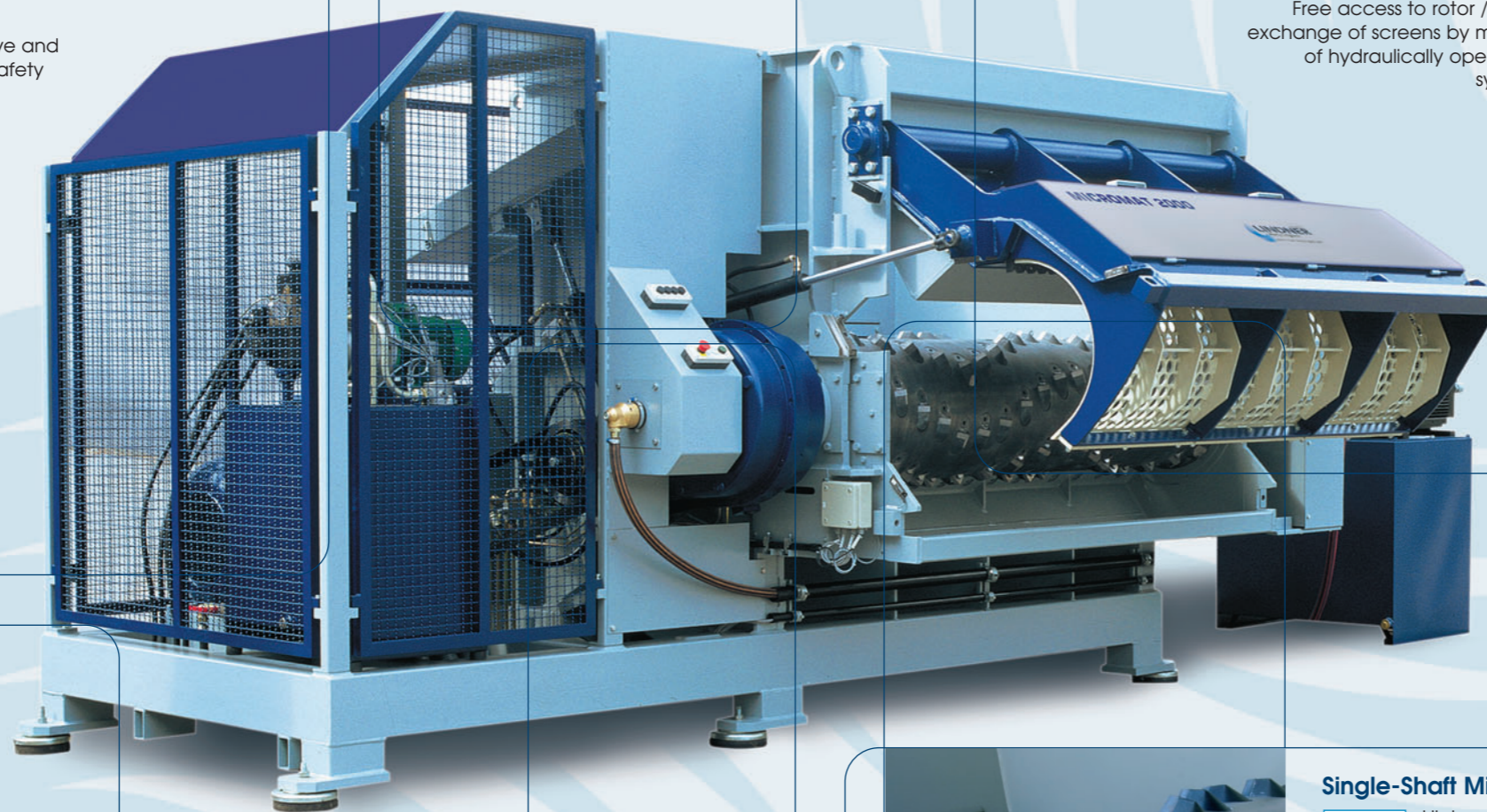
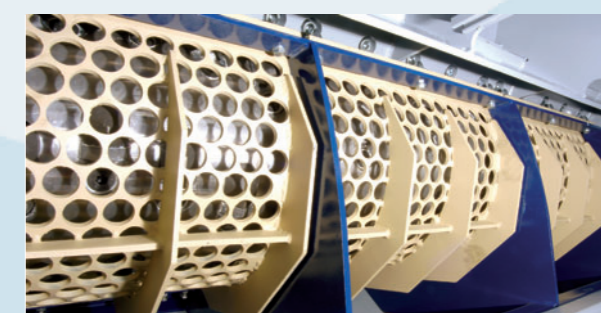
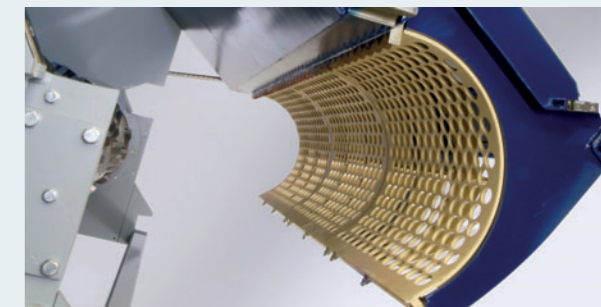


Problem-free material-supply to rotor by sickle-shaped pusher system



### Maintenance Door / Screen unit

Free access to rotor / easy exchange of screens by means of hydraulically operated system



### Leveling Device

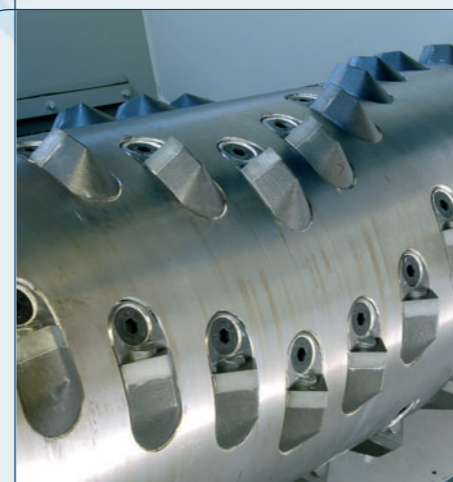
Machine-foot-element as levelling device and as vibration cushion



### Rotor Cooling



Provides almost constant temperature on rotor surface by closed cooling-system



### Single-Shaft Milling Rotor



High granulation quality and efficiency at low vibration run by spiral knife-assembly

### Monofix-System

Quick change of knives. Knives and knife supports fixed by one single screw only



### Control System

Programming for material-specific machine-adjustments. Service- / inspection- / failure-signals

