

# SATURN. 2200



## Product description



Low speed single-shaft shredder for the (primary-) shredding of various waste material (without large foreign parts). The output material is a defined granulate, according to the screen size installed.

## Application

Shredding of plastic film, packaging material, textiles, paper, rubber, waste wood, pallets, paper rolls, cable reels, mixed plastics for the thermal utilization and recycling, loose or pressed in bales.

## Throughput capacity

Example: mixed plastics 7 tons per hour (80 mm screen)\*

## Technical data

	SATURN 2200
Feed opening	2135 x 1525 mm
Hopper space	approx. 3,7 m <sup>3</sup>
Rotor length	2115 mm
Rotor periphery	740 mm
Rotor speed	80 rpm
Number of blades	36 pcs.
Counter-blades	6 pcs.
Scrapers	6 pcs.
Driving power	2 x 110 kW
Hydraulic pusher system	7,5 kW
Screen	60 - 130 mm
Weight	approx. 20000 kg



Input-material



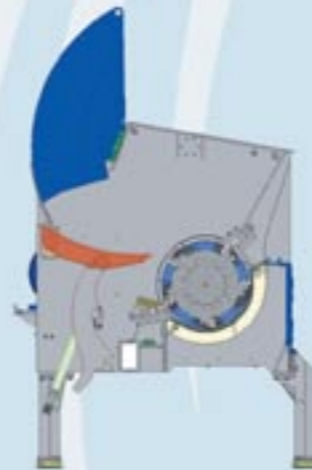
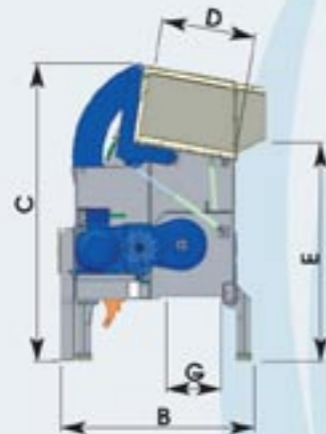
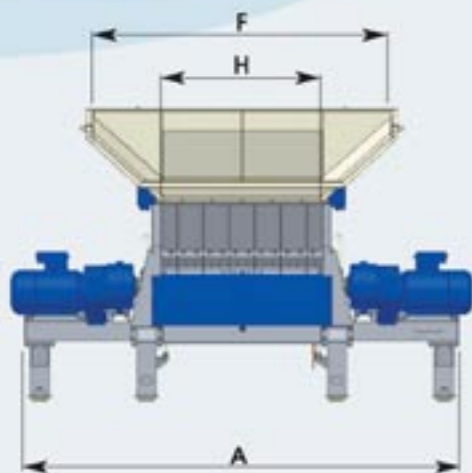
Output-size: 60 - 130 mm\*

\* Values for the orientation; depending on material, input- and output-size

## Dimensions

in mm	A	B	C	D	E	F	G	H
SATURN 2200	6200	2900	3950	1260	2960	3980	840	2140

Flap for removal of large foreign parts – large foreign particles can easily and quickly be removed without clearing the cutting chamber.



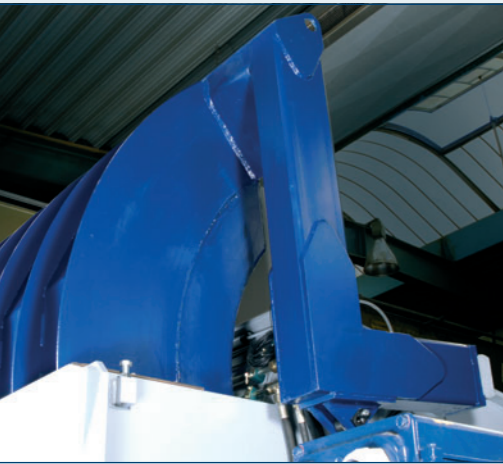
# SATURN. Single-Shaft Shredder.

we reduce it. waste. costs. problems.



PO Box 6010 East Brighton  
Victoria 3187 Australia  
p + 61 3 9592 4304  
f + 61 3 9591 0581  
e info@koga.com.au  
w www.koga.com.au





### Hydraulic Pusher System



Problem-free material-supply to rotor by sickle-shaped pusher system



### Single-Shaft Milling Rotor / Step Knife



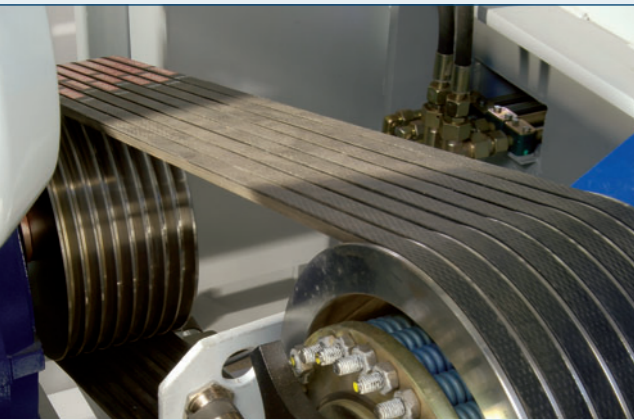
High granulation quality and efficiency at low vibration run by spiral knife-assembly



### Monofix-System

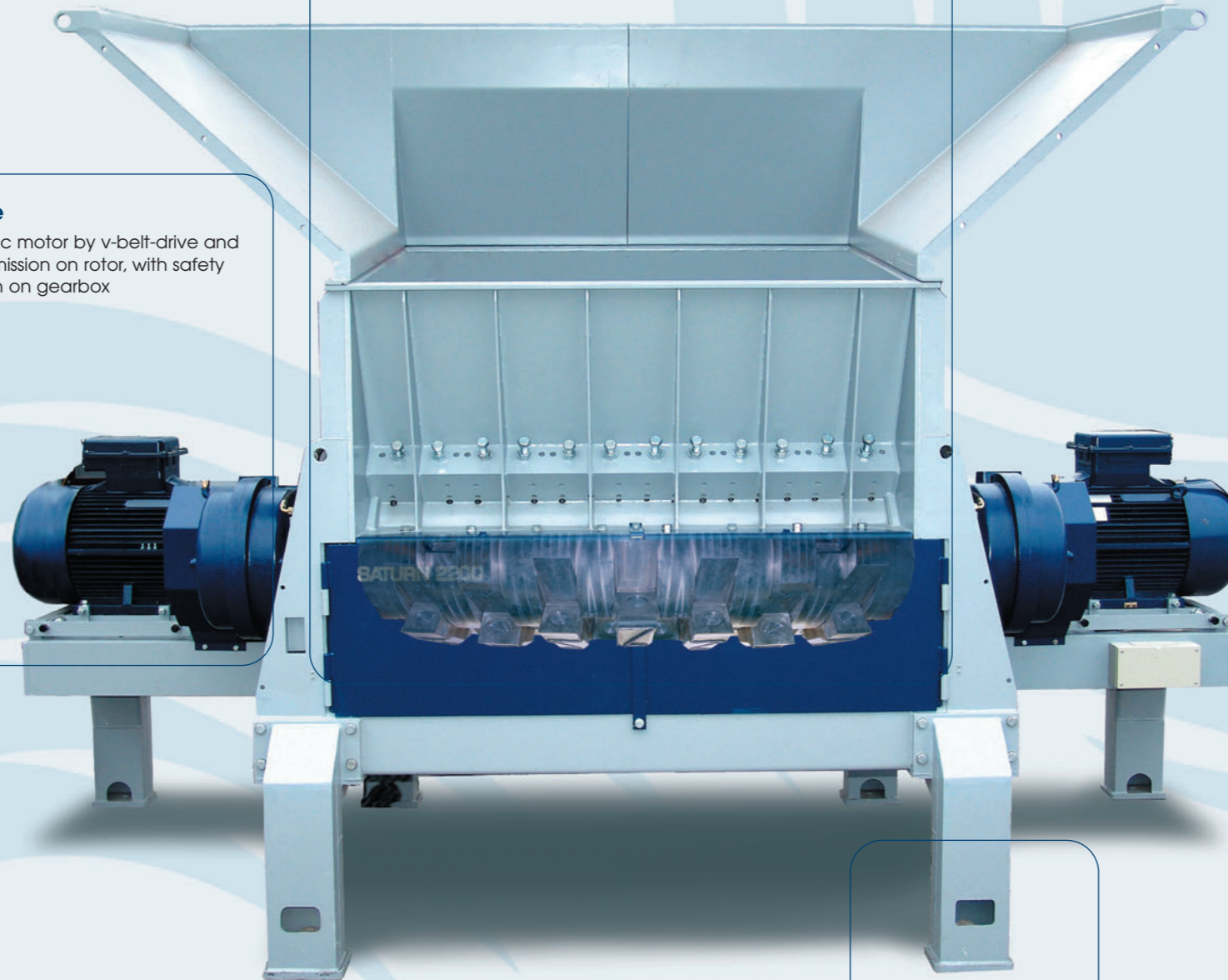


Knife fixation with only one screw. Quick change of knives



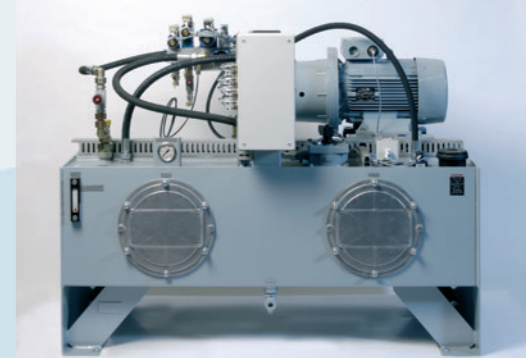
### Drive

Electric motor by v-belt-drive and transmission on rotor, with safety clutch on gearbox



### Hydraulics

Operation of proportionally controlled pusher system, operation of maintenance door / foreign part flap, operation of screen-cassette



### Maintenance Door / Foreign Part Flap



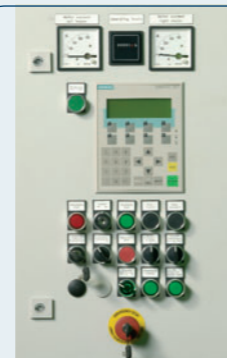
Service friendly maintenance door. Direct service-access to rotor. Quick removal of large foreign parts out of the cutting chamber. Easy change of knives



### Screen unit



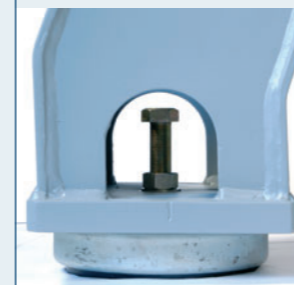
Easy exchange of screens by means of hydraulically operated system



### Control System



Programming for material-specific machine-adjustments. Service- / inspection- / failure-signals



### Leveling Device



Machine-foot-element as levelling device and as vibration cushion