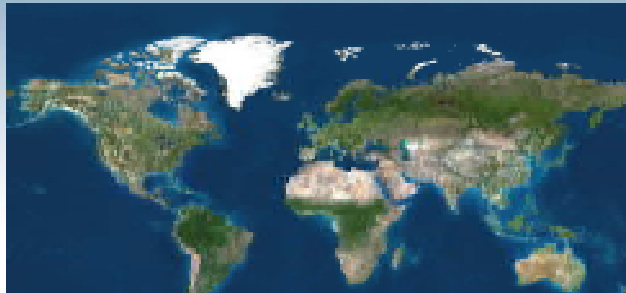


13.04.2010



# **ATM - PRESENTATION**

# Fields of Expertise



über 1000 Maschinen in 90 Ländern



**Expert Advice & Service**



**Complete Solutions**



**ATM - Team**



**Manufacturing - System**



**Know-How & Innovation**



**4.000 m<sup>2</sup> production area / total area 20,000 m<sup>2</sup>, 20-30 plants / year  
Production of 100,000 hours / 15,000 hours Engineering and Planning**







**1926**

**Foundation  
Arnold**

**1956**

**First Briquetting press  
Typ HSB 10 AV**



**First Baler press  
Typ SP 100**

**1964**

**1968**



**First Scrap Shaer  
Typ HS 600**

**1970**



**Start on location  
Knittelfeld**

**2002**

**Takeover from Arnold by ATM**



**2008**

**New Production in Fohnsdorf**



# Worldwide Sale

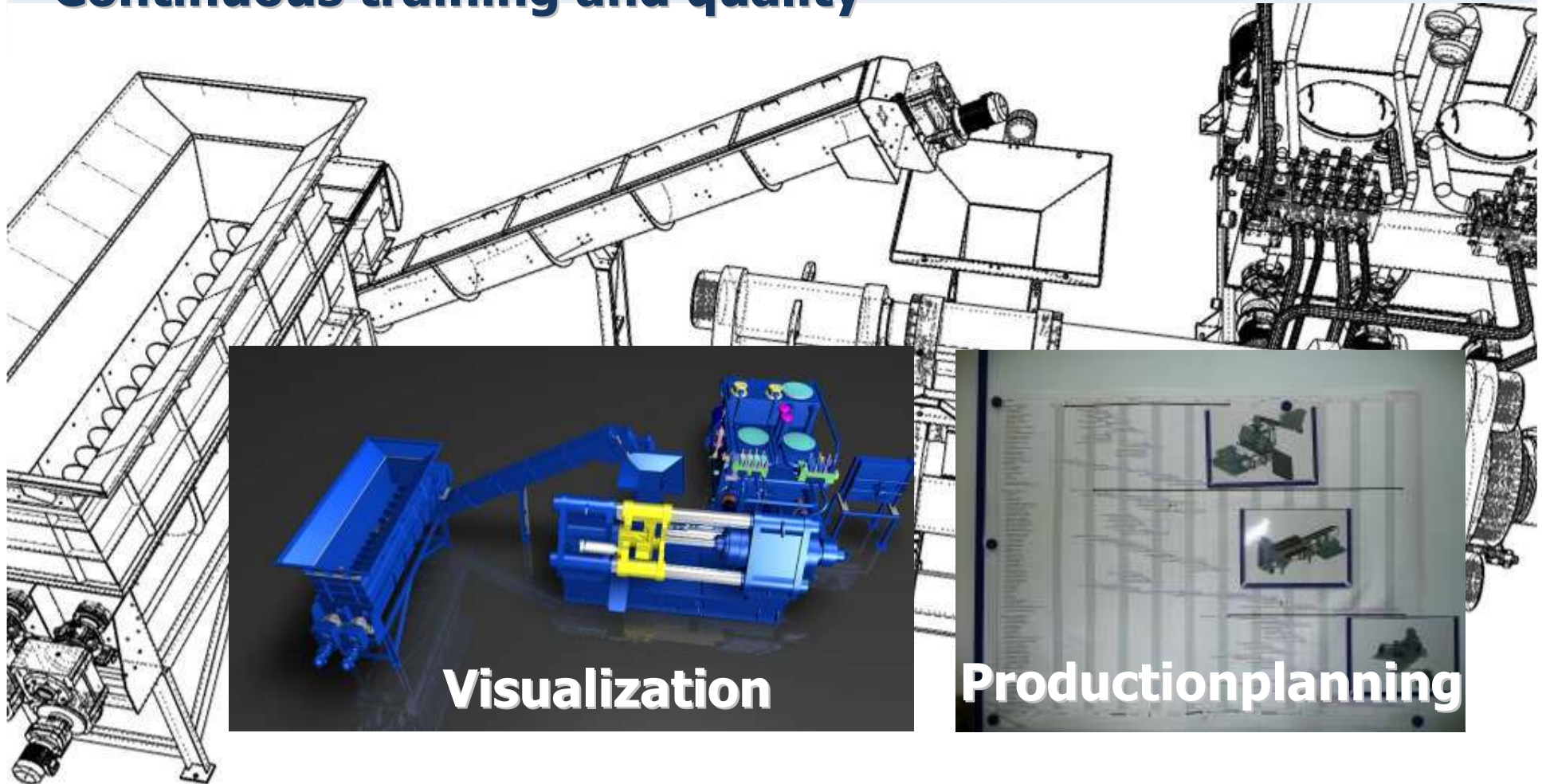


**more than 1000 machines in 90 countries**





**Design in 3D and calculation with finite elements**  
**Continuous training and quality**





**A high proportion of own production guarantees the quality**



# Delivery Program





## Typ HSB

- 6 sizes with  $\varnothing$  70 -  $\varnothing$  250  
HSB 7, 10, 12, 15, 18, 22
- Individual filling variations  
for different materials
- Production rate  
500 to 15,000 kg per hour
- Recovery of Coolant and  
Lubricants possible



# Briquettingpress HSB 7





# Briquettingpress HSB 10



# Briquettingpress HSB 12





# Briquettingpress HSB 15



# Briquettingpress HSB 18





## Advantages of ATM briquetting presses



- **Moving tool carrier for high external compression of the briquettes**

## Advantages of ATM briquetting presses



- **Filling valve for high feed-performance at low heating of hydraulic**
- **Moving tool carrier for high external compression of the briquettes**



## Advantages of ATM briquetting presses



- **Modular hydraulic tank system for individual driving power**
- **Filling valve for high feed-performance at low heating of hydraulic**
- **Moving tool carrier for high external compression of the briquettes**

## Advantages of ATM briquetting presses



- **Extensive range of special equipment and conveyor**
- **Modular hydraulic tank system for individual driving power**
- **Filling valve for high feed-performance at low heating of hydraulic**
- **Moving tool carrier for high external compression of the briquettes**



## Advantages of ATM briquetting presses



- Extensive range of special equipment and conveyor
  - Modular hydraulic tank system for individual driving power
  - Filling valve for high feed-performance at low heating of hydraulic
  - Moving tool carrier for high external compression of the briquettes
- 
- A high briquette density for a good transportation and best melting results



## Typ SPK

- 5 sizes with press box  
SPK 40, 100, 150, 200, 350
- Compression in 2 or 3  
compression levels
- Production rate  
1.000 to 30.000 Kg per hour





# Balerpress SPK 40-2



# Balerpress SPK 100-2





# Balerpress SPK 150-2



# Balerpress SPK 100-3





# Balerpress SPK 200-3



# Balerpress SPK 350-3





## Advantages of ATM baler presses



- **Maintenance-friendly hydraulic control**

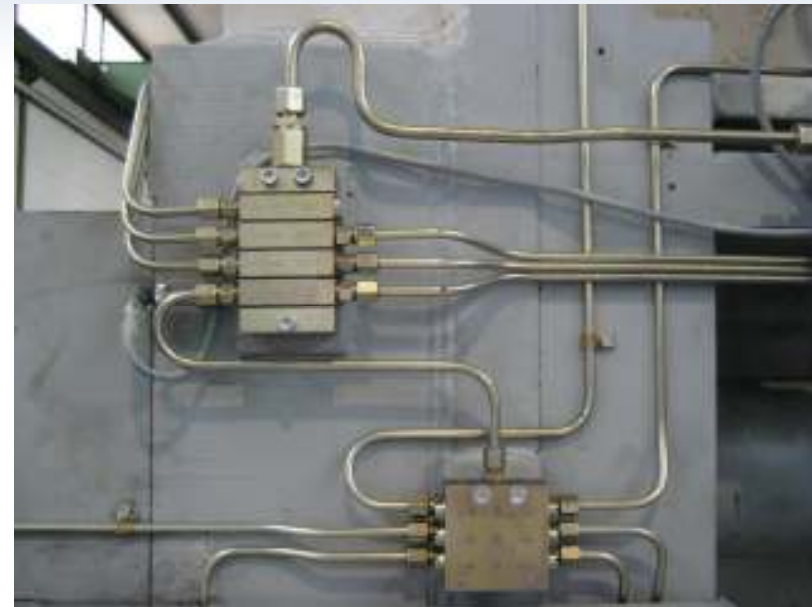
## Advantages of ATM baler presses



- **Wave-shaped wear plates**
- **Maintenance-friendly hydraulic control**



## Advantages of ATM baler presses



- **Central lubrication systems for continuous operation**
- **Wave-shaped wear plates**
- **Maintenance-friendly hydraulic control**

## Advantages of ATM baler presses



- **Complete Conveyor technologie with weighing and bale transport**
- **Central lubrication systems for continous operation**
- **Wave-shaped wear plates**
- **Maintenance-friendly hydraulic control**

## Advantages of ATM baler presses



- **Complete Conveyor technologie with weighing and bale transport**
- **Central lubrication systems for continous operation**
- **Wave-shaped wear plates**
- **Maintenance-friendly hydraulic control**
- **Optimal bale density by high press power**





## Typ SPD

- 5 sizes with cover  
**SPD 80, 100, 150, 200, 300**
- Compression  
in 2 or 3  
compression levels
- Production rate  
**2.000 to 30.000 Kg per  
hour**



# Balerpress SPD 80-2





# Balerpress SPD 100-2



# Balerpress SPD 100-3





# Balerpress SPD 150-3



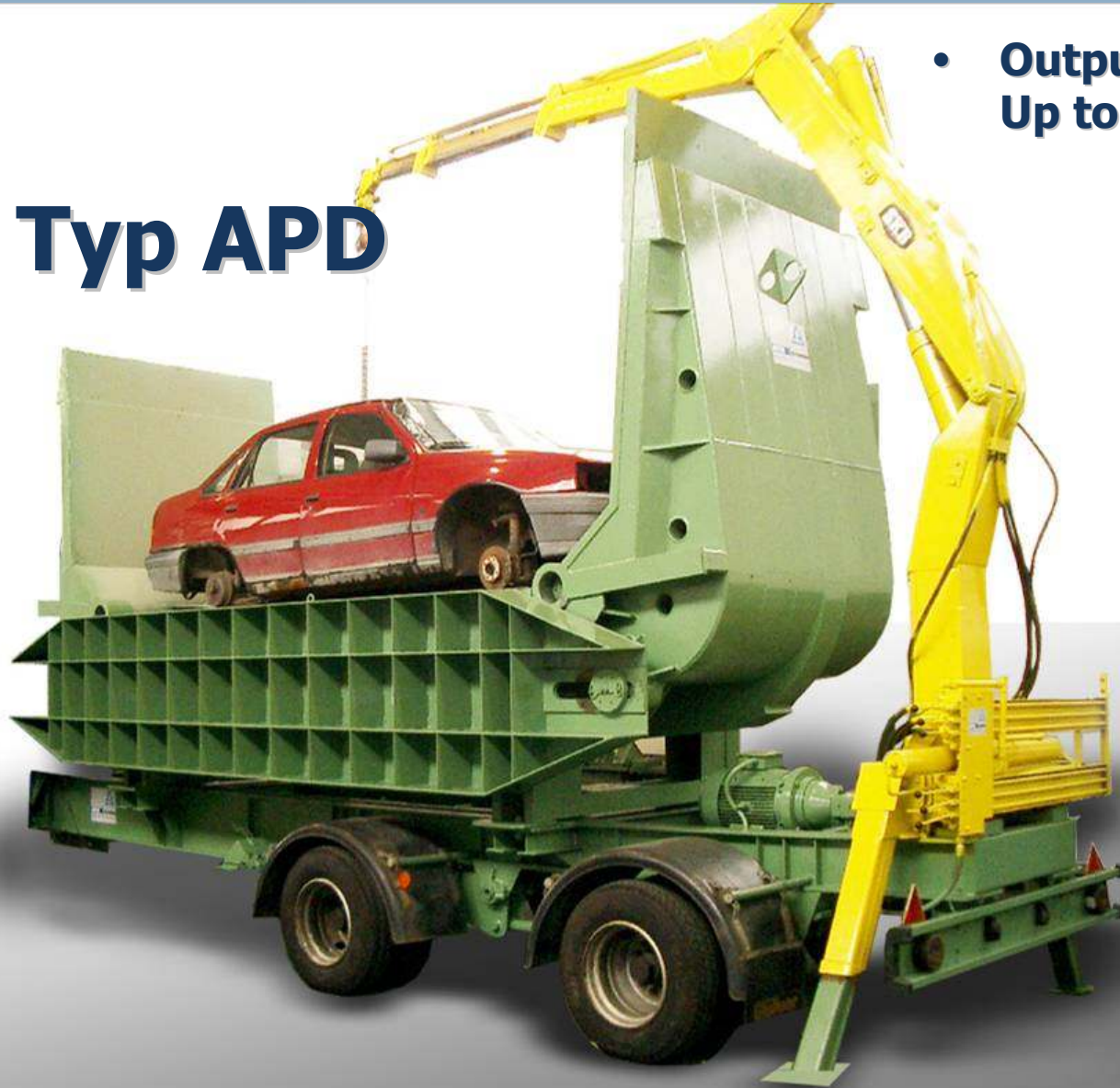
# Balerpress SPD 300-3



# Car flattener

- **Output:**  
**Up to 50 car bodies per hour**

**Typ APD**





# Car flattener



- **Work cycle of Car flattener**

# Car flattener



- **Work cycle of Car flattener**

# Car flattener



- **Work cycle of Car flattener**



# Car flattener



- **Work cycle of Car flattener**

# Car flattener



- **Work cycle of Car flattener**

# Car flattener



- **Work cycle of Car flattener**



# Car flattener



- **Work cycle of Car flattener**

## Typ HPS

- **5 sizes**  
**HPS 650, 700, 850, 1000, 1250**
- **Precompression with variably adjustable sidebar**
- **Produktion rate**  
**10.000 to 50.000 Kg per hour**



# Scrap Shear HPS 650





# Scrap Shear HPS 700



# Scrap Shear HPS 850



# Scrap Shear HPS 1000





## Advantages of ATM scrap shears



- **Extremely solid design**
- **air-conditioned working place with system visualization**
- **Hydraulic knife fixation**
- **Modular hydraulic tank system for individual driving power**

# Iron Cast Breaker

## Typ GBP

- **2 sizes**  
**GBP 400 and 600**
- **Production rate:**  
**10.000 and 16.000 Kg per hour**



# Iron Cast Breaker



- **Extremely solid design**
- **Plant Visualization**
- **Conveyor technology for scrap transport**



## Typ ESB

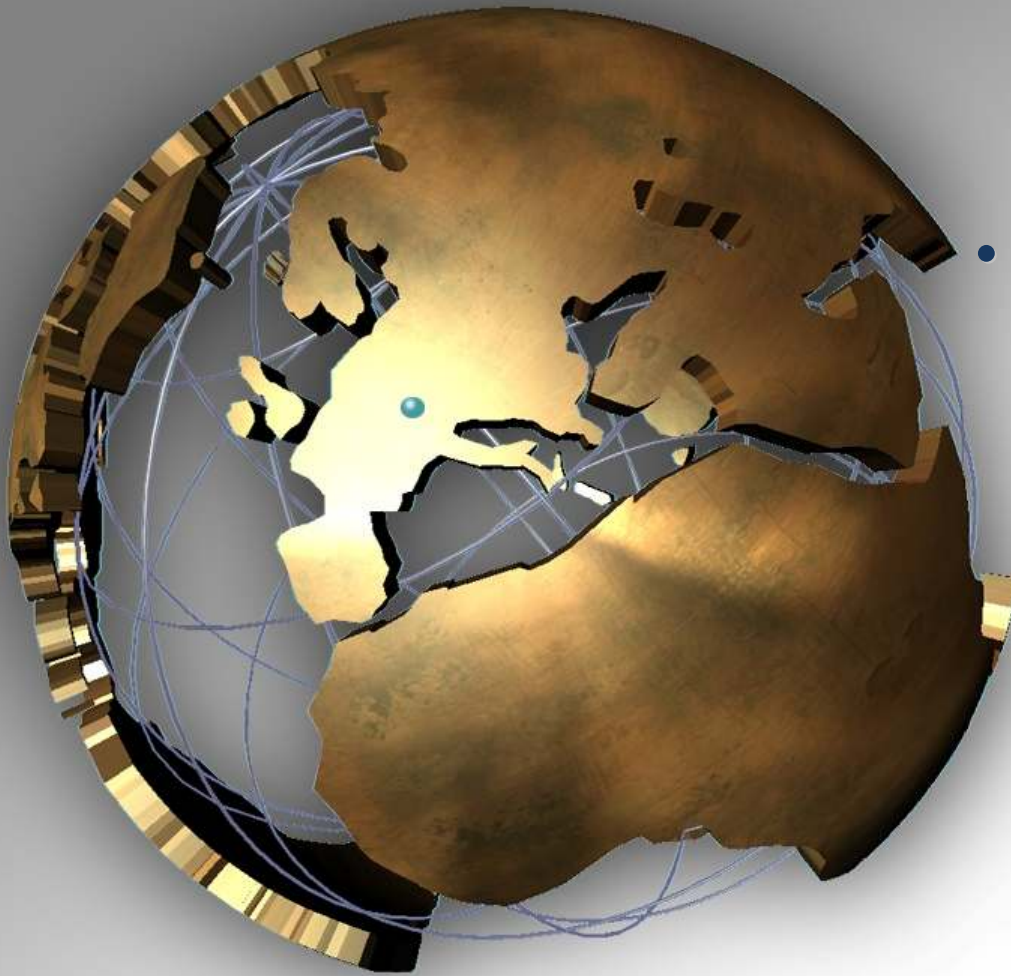
- **Mobile und stationary Version**
- **Production rate:  
7.000 and 10.000 Kg  
per hour**



## Advantages of ATM rail breakers



- **No cut function like a scrap shears, so no knife wear**
- **Low operating and maintenance costs**
- **Quickly and efficiently in mobile version**



- **Faster and worldwide service through our specialist**
- **Error analysis of modem**



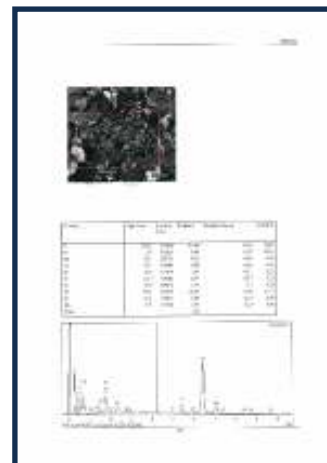
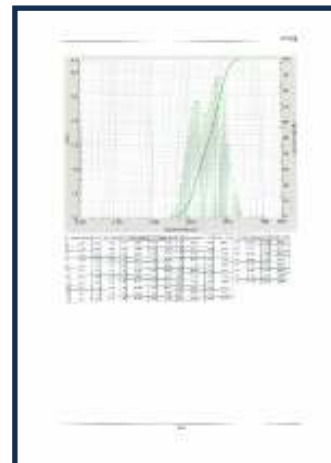
- 



 **Das Land  
Steiermark**  
→ Wirtschaft & Innovation

 **SFG** 

Im Auftrag des Wirtschaftslandrates



**MONTAN**  
**UNIVERSITÄT**  
**WWW.UNILEOBEN.AC.AT**

## OUR REFERENCES

**Schupan**  
& Sons Inc.

**ALCOA**

**MONICO**  
ALLOYS

**SIMS**  
METAL  
MANAGEMENT

**SCHOLZ**  
Recycling GmbH



**Magnetto**  
Automotive



Mercedes-Benz

**SAG**  
Salzgitter Aluminium AG

**DAIMLERCHRYSLER**

**AW AISIN AW CO., LTD.**

**Iran Khodro Industrial Group**



**BOSCH**

**LOACKER**  
[www.loacker.at](http://www.loacker.at)



**TOFAŞ**  
TOSK  
OTOMOTIV  
FABRİKASI A.Ş.



**KWD**

**TOFAŞ**



**KWD**

# Group Structure



Strategic Leadership  
Service-Center



Briquetting-/Baling Presses  
Scrap Shears  
Rail-/Cast Iron Breakers



Steel-/Plant Constructions  
Mast-/ Container Constructions  
Hall Constructions



Human Resource Management  
Insurance



Care Agency  
Assisted Living

- Turnover approx. EUR 20 Mio.
- 140 Employees
- 2 production locations
- 10.000 m<sup>2</sup> production area